

RE341

Boucher Land Sale

Hammond Township, Polk County

Climax / Crookston, Minnesota

www.redriverlandco.com



**160 ACRES LOCATED 10 MILES SOUTH OF
CROOKSTON / 6 MILES EAST OF CLIMAX.**

89 PRODUCTIVITY INDEX

**WELL DRAINED RED RIVER VALLEY LAND
IN GREAT OPERATING CONDITION**

Legal Description

NE1/4 of Section 28 - 148N -
47W

2018 Taxes

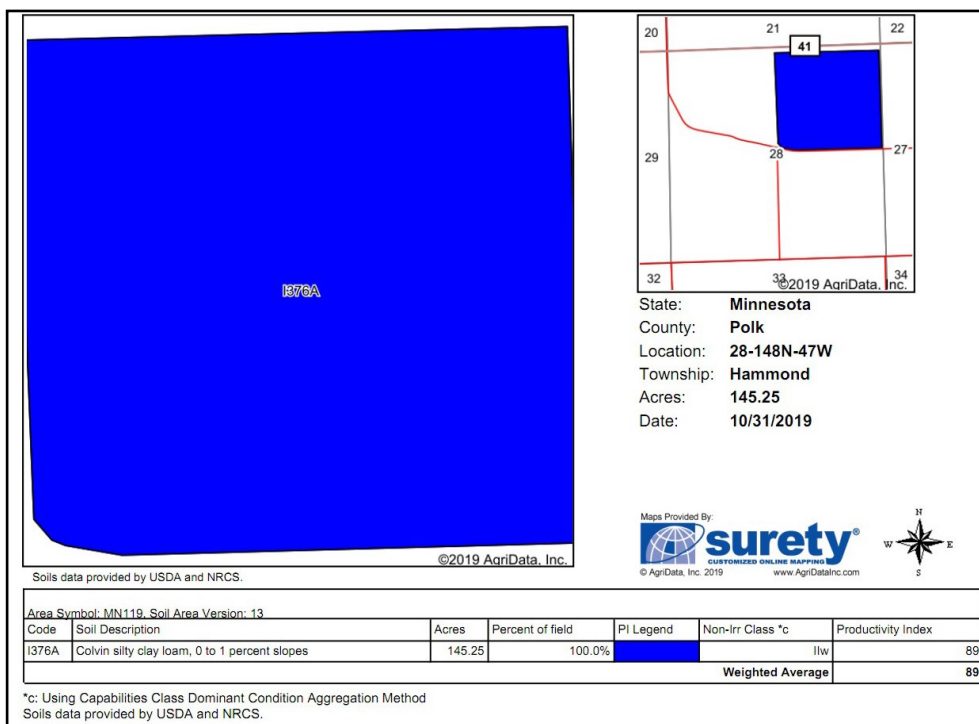
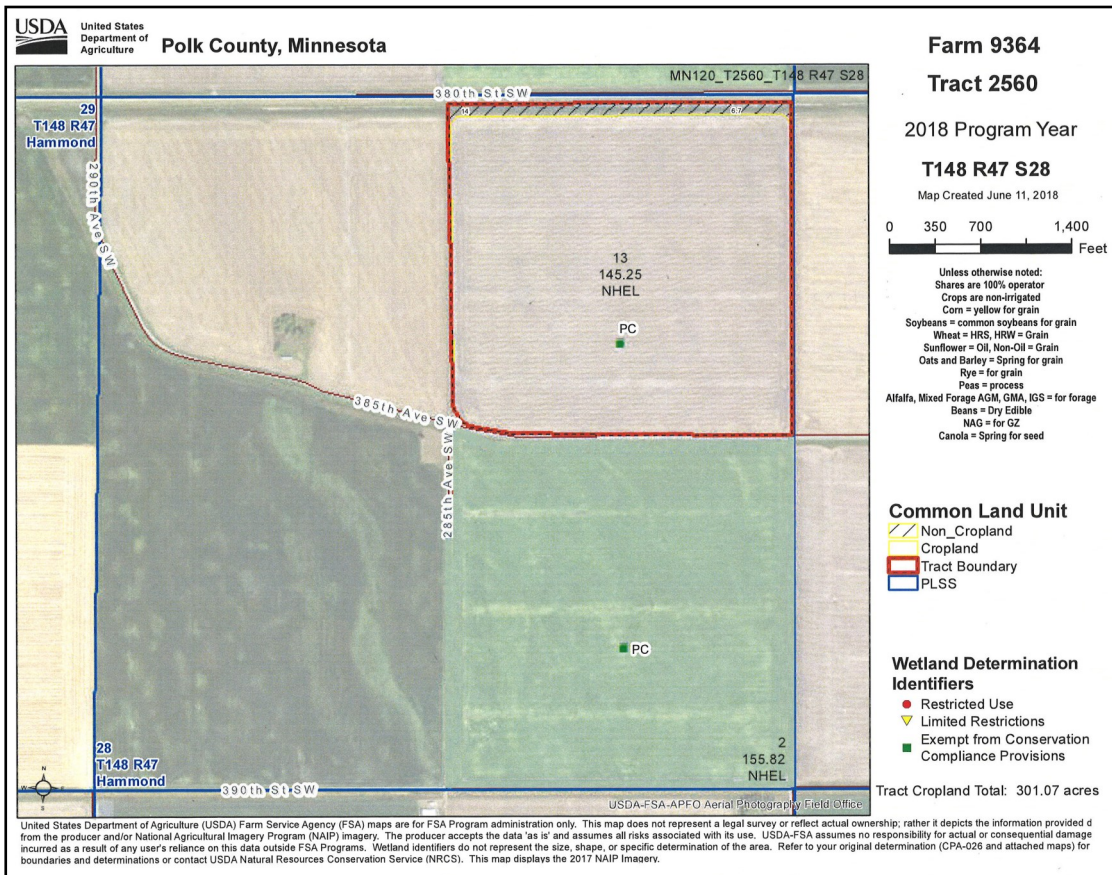
\$5,304 (estimate) separation
from adjoining parcel in
progress.

Location

10 miles south of Crookston
on Hwy 14 and 1/2 mile west
on Hwy 41

Listed Price

\$610,000



Legal Description:

NE1/4 of Section 28 - 148N - 47W

Acres / Tillable Acres
160 / 145.25

Three-year Crop History:

2017 Wheat
2018 Wheat
2019 Sugar Beets

Soil Productivity Index: 89.0

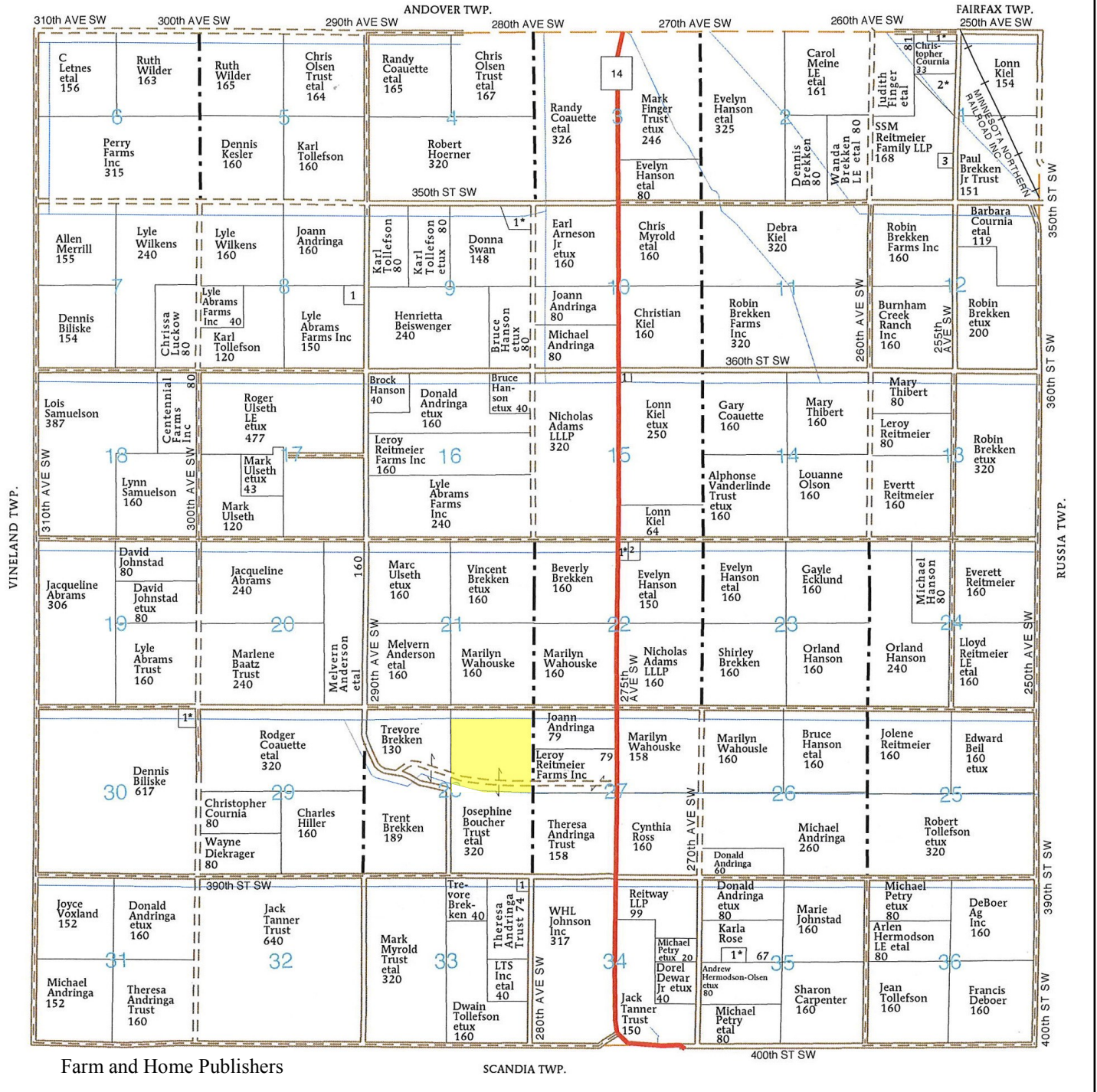
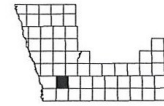
Plat Map

T-148-N

HAMMOND PLAT

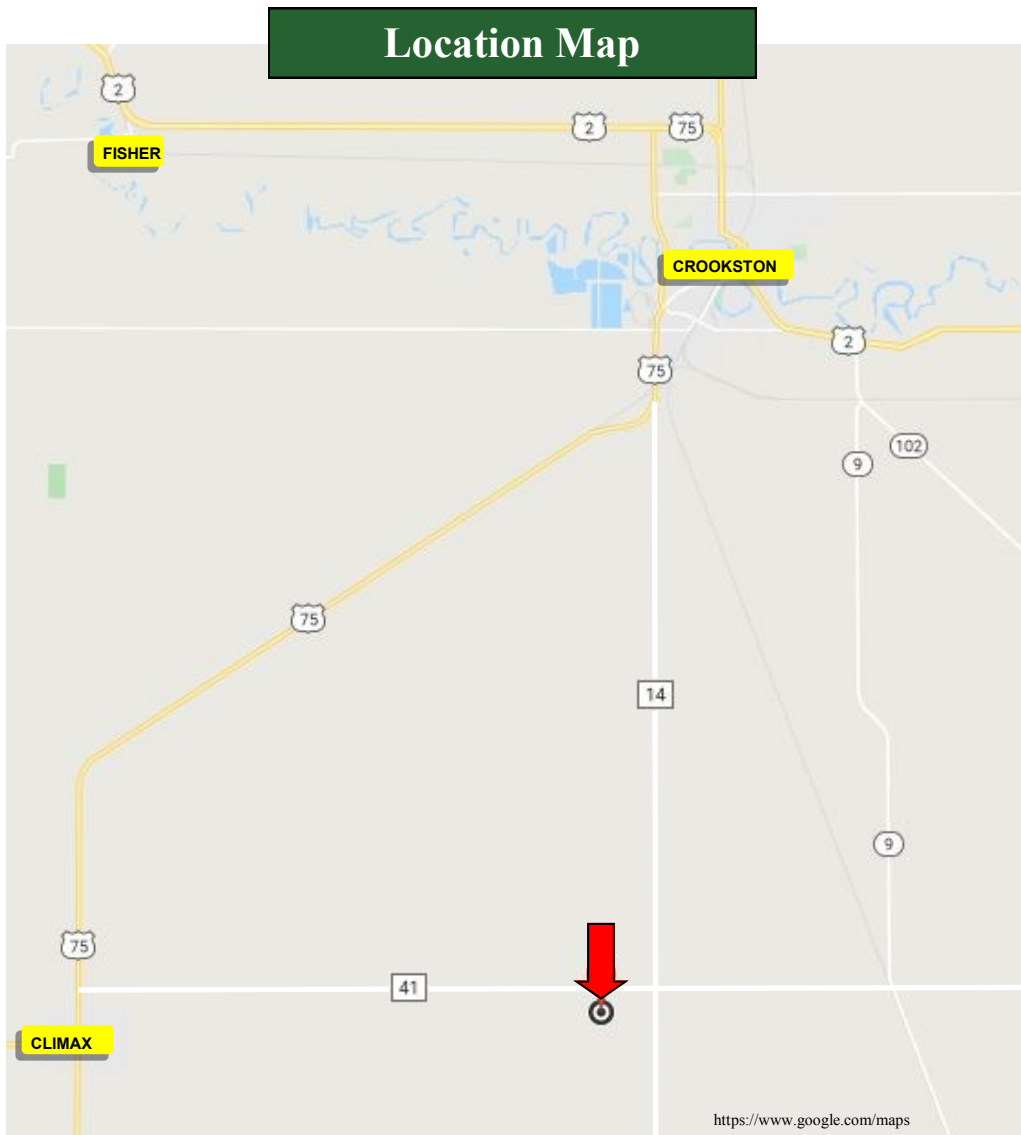
(Landowners)

R-47-W



Farm and Home Publishers

SCANDIA TWP.



RED RIVER LAND COMPANY

John Botsford • Chris Griffin

Phone: 701.757.1888

Fax: 701.566.8760

John Cell: 701.213.6691
john@redriverlandco.com

Chris Cell: 218.779.1064
chris@redriverlandco.com

Bremer Bank Building
3100 S Columbia Rd, Ste 300
Grand Forks, ND 58201

NOTE: Red River Land Company assembles information from sources considered reliable but does not guarantee accuracy.
Each prospective buyer should conduct their own due diligence concerning the property.

www.redriverlandco.com